

SECOND ADDITION TO P.G.A. RESORT COMMUNITY PLAT OF RESORT CORE

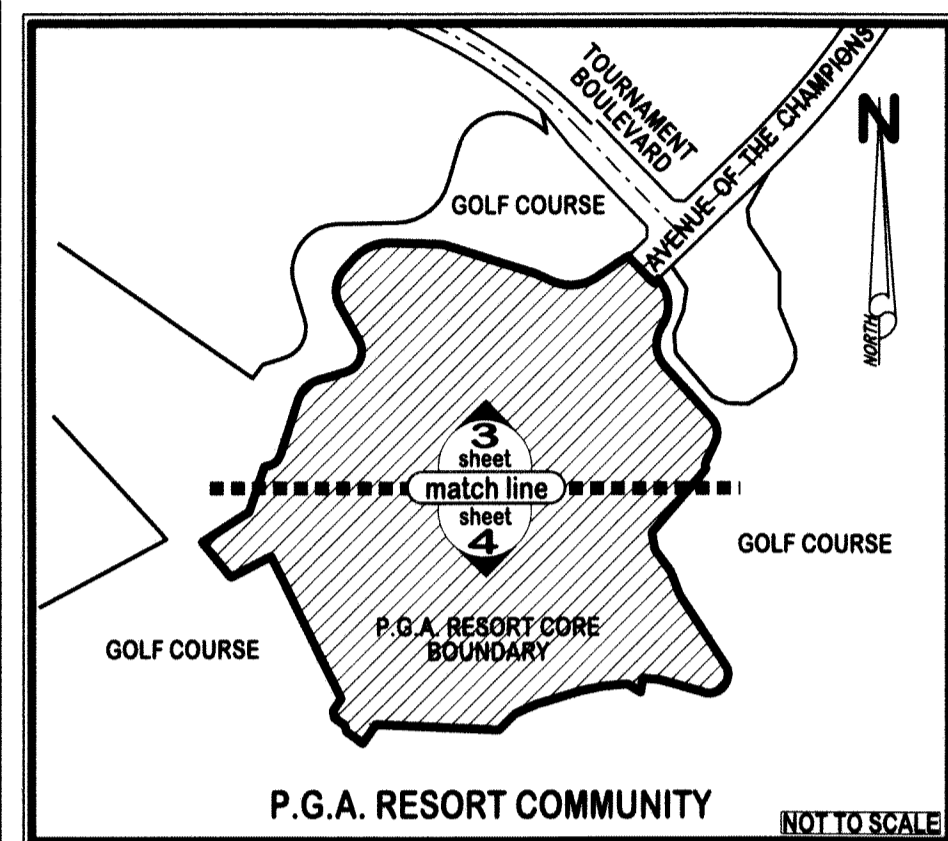
PLANNED UNIT DEVELOPMENT IN P.G.A NATIONAL PLANNED COMMUNITY DISTRICT

BEING A REPLAT OF P.G.A. RESORT COMMUNITY PLAT OF RESORT CORE, AS SHOWN ON PLAT BOOK 41, PAGES 121 THROUGH 123 AND
 A REPLAT OF FIRST ADDITION TO P.G.A. RESORT COMMUNITY PLAT OF RESORT CORE, AS SHOWN ON PLAT BOOK 59, PAGES 56 THROUGH 57 AND
 TOGETHER WITH PORTIONS OF TRACT G-1, AS SHOWN ON THE PLAT OF P.G.A. RESORT COMMUNITY GOLF COURSE PLAT, RECORDED IN
 PLAT BOOK 94, PAGES 116 THROUGH 129, PUBLIC RECORDS OF PALM BEACH COUNTY, FLORIDA.
 LYING IN SECTION 10, TOWNSHIP 42 SOUTH, RANGE 42 EAST
 CITY OF PALM BEACH GARDENS, PALM BEACH COUNTY, FLORIDA

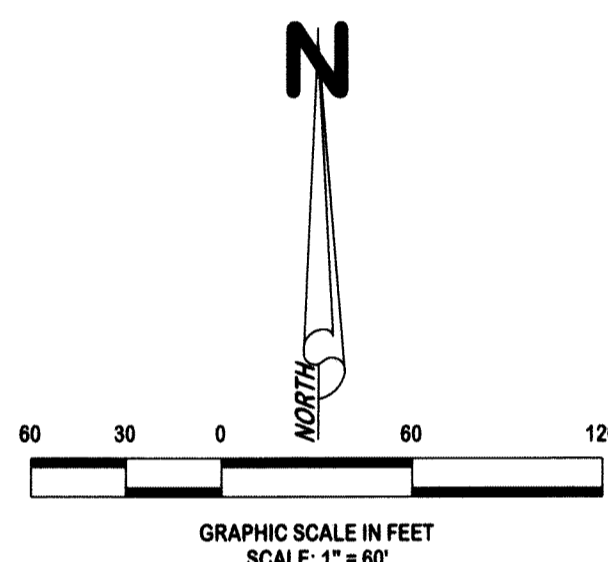
164

APRIL 2022

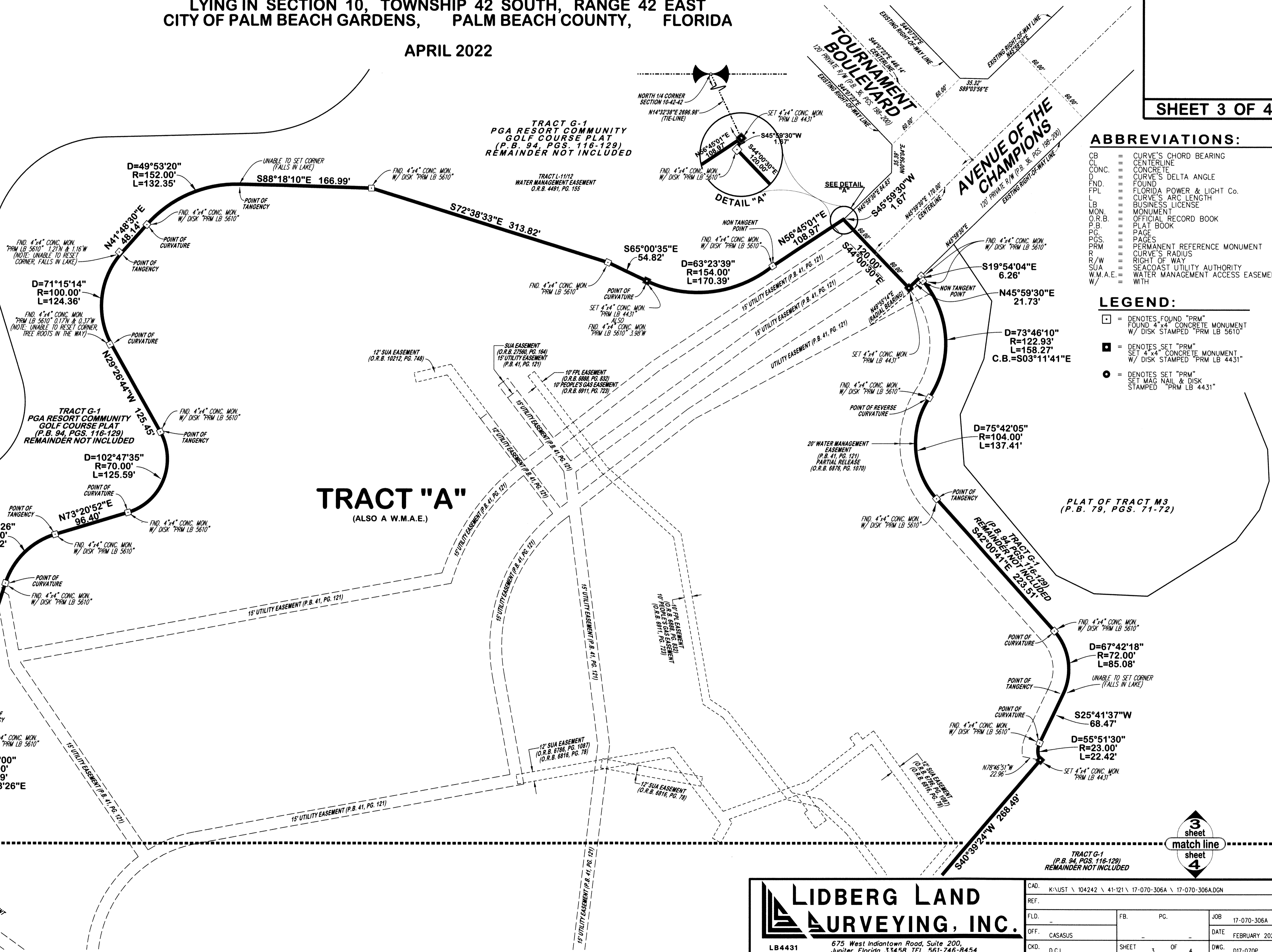
SHEET 3 OF 4



SHEET INDEX



PGA RESORT COMMUNITY PLAT OF
PGA CLUB COTTAGES
(P.B. 39, PGS. 147-150)



- ABBREVIATIONS:**
- CB = CURVE'S CHORD BEARING
 - CL = CENTERLINE
 - CONC. = CONCRETE
 - D = CURVE'S DELTA ANGLE
 - FND. = FOUND
 - FPL = FLORIDA POWER & LIGHT CO.
 - L = CURVE'S ARC LENGTH
 - LB = BUSINESS LICENSE
 - MON. = MONUMENT
 - O.R.B. = OFFICIAL RECORD BOOK
 - P.B. = PLAT BOOK
 - PG. = PAGE
 - PGS. = PAGES
 - PRM = PERMANENT REFERENCE MONUMENT
 - R = CURVE'S RADIUS
 - R/W = RIGHT OF WAY
 - SUA = SEACOAST UTILITY AUTHORITY
 - W.M.A.E. = WATER MANAGEMENT ACCESS EASEMENT
 - W/ = WITH

- LEGEND:**
- = DENOTES FOUND "PRM" FOUND 4"x4" CONCRETE MONUMENT W/ DISK STAMPED "PRM LB 5610"
 - = DENOTES SET "PRM" SET 4"x4" CONCRETE MONUMENT W/ DISK STAMPED "PRM LB 4431"
 - = DENOTES SET "PRM" SET MAG NAIL & DISK STAMPED "PRM LB 4431"

LIDBERG LAND SURVEYING, INC.
 LB4431 675 West Indiantown Road, Suite 200,
 Jupiter, Florida 33458 TEL. 561-746-8454

CAD: K:\UST \ 104242 \ 41-121 \ 17-070-306A \ 17-070-306A.DGN			
REF.			
FLD.		FB.	PG.
OFF.	CASASUS		JOB 17-070-306A
CKD.	D.C.L.	SHEET 3 OF 4	DATE FEBRUARY 2022
			DWG. 017-070P